

**Reasoning**

0.12 < 0.06  
because 1 < 6.



Is he correct? Explain your answer.

| Ones | . | tenths | hundredths |
|------|---|--------|------------|
|      |   |        |            |
|      |   |        |            |

Forgotten your login? Let me know!

**Equivalent Fractions and Decimals**

Write the fraction and decimal that matches these diagrams.

a) 

| ones | tenths             |
|------|--------------------|
|      | 0.1 0.1<br>0.1 0.1 |

    b) 

| ones | tenths         |
|------|----------------|
|      | 0.1 0.1<br>0.1 |

    c) 

| ones | tenths  |
|------|---|
|      | 0.1 0.1<br>0.1 0.1<br>0.1 0.1<br>0.1 0.1<br>0.1 |

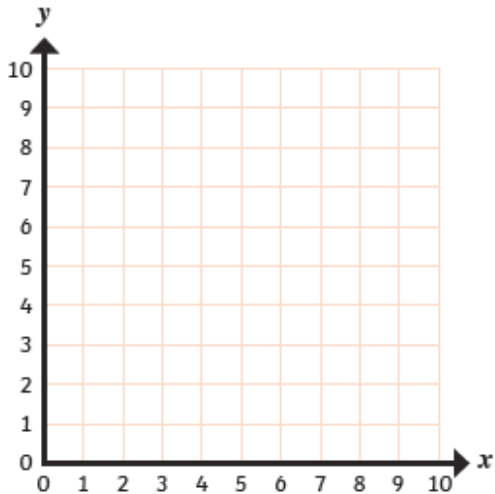
    d) 

| ones | tenths                        |
|------|-------------------------------|
|      | 0.1 0.1<br>0.1 0.1<br>0.1 0.1 |

**Co-ordinates**

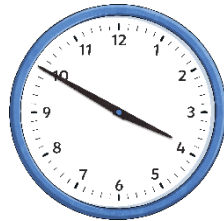
Plot the point on the coordinate grid.  
Remember: X before Y!

A (7, 4)   B (2, 6)   C (9, 3)   D (8, 1)   E (10, 5)



**Time**

Is she correct? Explain your answer.



These clocks could be showing times 25 minutes apart.



**Multiplication**

- |   |   |   |
|---|---|---|
| $7 \times 4 = \underline{\hspace{2cm}}$   | $8 \times 7 = \underline{\hspace{2cm}}$ | $48 \div 12 = \underline{\hspace{2cm}}$ |
| $9 \times 2 = \underline{\hspace{2cm}}$   | $6 \times 4 = \underline{\hspace{2cm}}$ | $56 \div 7 = \underline{\hspace{2cm}}$  |
| $4 \times 9 = \underline{\hspace{2cm}}$   | $5 \times 8 = \underline{\hspace{2cm}}$ | $33 \div 3 = \underline{\hspace{2cm}}$  |
| $10 \times 12 = \underline{\hspace{2cm}}$ | $0 \times 6 = \underline{\hspace{2cm}}$ | $798 \div 1 = \underline{\hspace{2cm}}$ |